

# CALENDAR 2014



## CHEMICALS BUSINESS AREA



PA6 polymer for compounding, films and fibres; PA66 polymer for compounding, extrusion, films and fibres.

PA6/66 copolymer for monofilament, films and extrusion. PA6.10 polymer derived for 64% from renewable sources.



Adipic acid for the production of fibres, PA66 engineering plastics, polyurethanes, resins, plasticizers, lubricants, adhesives, additives, pharmaceuticals, insecticides and herbicides; HMDA, intermediate for polyamides and coatings;

AGS, intermediate for polyesters and solvents; nitric acid for metallurgy, steel treatment, zinc-plating and chromium plating (galvanic industry), machinery cleaning and disinfection (dairy industry) and nitrogen fertilizer production; KAoil; esters for biodegradable solvents, paint removers, cosmetics, detergents, coatings, plasticizers and chemical intermediates.

## PLASTICS BUSINESS AREA



A line of PA6, PA66 and 64% renewably sourced PA6.10 polymers and copolymers used for injection, extrusion and blow moulding for applications in the industrial, electric-electronic, and automotive sectors.



Eco-sustainable range of materials mainly coming from RadiciGroup's polymerization, fibres and compound plants scraps used for injection, extrusion and blow-moulding for applications in the industrial, electric-electronic and automotive sectors.



A line of thermoplastic semi-crystalline PBT and glass fibre reinforced PBT used for injection moulding for applications in the industrial, electric-electronic, and automotive sectors.



A line of PA and PBT flame retardant grades used for injection and extrusion for all applications where high fire resistance is required, especially in the electric-electronic and automotive sectors.



Recyclable and non toxic polyethylene-based infill for synthetic turf sports fields. Polypropylene based compound, glass fibre reinforced used for extrusion for applications in the automotive sector.



A line of thermoplastic elastomers based on SEBS, SBS and Co-polyesters used for injection and blow moulding for applications in the industrial, electric-electronic and automotive sectors.

## ■ SYNTHETIC FIBRES BUSINESS AREA ■



High-tenacity polyamide 66 yarn used for the production of technical items for sports, automotive and industrial applications.



Polyamide yarn and staple used for the production of fashionwear, technicalwear, sportswear and intimatewear, as well as household furnishings.



Polyamide 6 and 66 BCF yarn for domestic/residential, contract and automotive carpeting, coverings and upholstery.



Polyamide 6 staple fibre available in raw-white and solution-dyed versions, the latter in tailor-made colours. It is used in the automotive, technical/industrial, apparel and carpeting sectors.



Raw, solution-dyed and additivated polyester yarn (flame retardant, bacteriostatic, UV protection) for numerous applications, from upholstery to curtains, sportswear, hygiene, medical and automotive.



Eco-sustainable polyester yarn produced from post-consumer recycled PET bottles; suitable for a vast range of applications from apparel to upholstery, automotive, technical and industrial applications.



Raw-white and solution or yarn dyed polyester, available in additivated versions (flame retardant, bacteriostatic, UV protection) and also as microfibre, supermicrofibre and bicomponent fibre (PA/PET) for apparel, household furnishings, automotive and technical/industrial applications.

**r-Radyarn®** Continuous polyester filament derived from post-consumer recycled polymer, it boasts high versatility as for its dope dyed, bacteriostatic, and UV stabilized versions. It can be used for a wide range of applications, from apparel, to home interiors to technical applications.

**CRYLOR®** Acrylic fibre and top for technicalwear, sportswear, knitwear and upholstery.

**CornLeaf®** Solution-dyed yarn with antimicrobial functionality, made from Ingeo™ polylactic acid (PLA) 100% natural biopolymer. Derived from renewable sources, this product is suitable for apparel, intimatewear, furnishings and consumer goods.

**RADIGREEN®** PP, PE and PA artificial grass yarn for sports fields, recreational and domestic indoor and outdoor applications, including landscaping (gardens and urban design).

**DYLAR®** PP nonwoven spunbonded for several uses in the roofing, hygiene, medical, automotive, furnishing and single-use markets.

## Radici Partecipazioni SPA

Via Ugo Foscolo, 152

It - 24024 Gandino (BG)

phone +39 035 715411, fax +39 035 715477

e-mail: [info@radicigroup.com](mailto:info@radicigroup.com)

[www.radicigroup.com](http://www.radicigroup.com)

Via Ca' Antonelli, 55

It - 24024 Gandino (BG)

phone +39 035 715411, fax +39 035 715477

e-mail: [info@radicigroup.com](mailto:info@radicigroup.com)

[www.radicigroup.com](http://www.radicigroup.com)



© This calendar is printed on  
**FSC Natural Evolution** paper.

[www.fsc.org](http://www.fsc.org)

# 2014



JANUARY	1 2 3 4 5 6 7 8 9 10 11 12 13 14 15 16 17 18 19 20 21 22 23 24 25 26 27 28 29 30 31	GENNAIO
FEBRUARY	1 2 3 4 5 6 7 8 9 10 11 12 13 14 15 16 17 18 19 20 21 22 23 24 25 26 27 28	FEBBRAIO
MARCH	1 2 3 4 5 6 7 8 9 10 11 12 13 14 15 16 17 18 19 20 21 22 23 24 25 26 27 28 29 30 31	MARZO
APRIL	1 2 3 4 5 6 7 8 9 10 11 12 13 14 15 16 17 18 19 20 21 22 23 24 25 26 27 28 29 30	APRILE
MAY	1 2 3 4 5 6 7 8 9 10 11 12 13 14 15 16 17 18 19 20 21 22 23 24 25 26 27 28 29 30 31	MAGGIO
JUNE	1 2 3 4 5 6 7 8 9 10 11 12 13 14 15 16 17 18 19 20 21 22 23 24 25 26 27 28 29 30	GIUGNO
JULY	1 2 3 4 5 6 7 8 9 10 11 12 13 14 15 16 17 18 19 20 21 22 23 24 25 26 27 28 29 30 31	LUGLIO
AUGUST	1 2 3 4 5 6 7 8 9 10 11 12 13 14 15 16 17 18 19 20 21 22 23 24 25 26 27 28 29 30 31	AGOSTO
SEPTEMBER	1 2 3 4 5 6 7 8 9 10 11 12 13 14 15 16 17 18 19 20 21 22 23 24 25 26 27 28 29 30	SETTEMBRE
OCTOBER	1 2 3 4 5 6 7 8 9 10 11 12 13 14 15 16 17 18 19 20 21 22 23 24 25 26 27 28 29 30 31	OTTOBRE
NOVEMBER	1 2 3 4 5 6 7 8 9 10 11 12 13 14 15 16 17 18 19 20 21 22 23 24 25 26 27 28 29 30	NOVEMBRE
DECEMBER	1 2 3 4 5 6 7 8 9 10 11 12 13 14 15 16 17 18 19 20 21 22 23 24 25 26 27 28 29 30 31	DICEMBRE



Photo by Virgilio Fianza, from the project: "mezzo - corpo - immagine"

Gennaio  
**JANUARY** | **01** | 



Lunedì <b>MON</b>	Martedì <b>TUE</b>	Mercoledì <b>WED</b>	Giovedì <b>THU</b>	Venerdì <b>FRI</b>	Sabato <b>SAT</b>	Domenica <b>SUN</b>	
30	31	<b>1</b>	2	3	4	<b>5</b>	1
<b>6</b>	7	8	9	10	11	<b>12</b>	2
13	14	15	16	17	18	<b>19</b>	3
20	21	22	23	24	25	<b>26</b>	4
27	28	29	30	31	1	2	5



Photo by Virgilio Fidanza, from the project: "mezzo - corpo - immagine"



Febbraio  
FEBRUARY

02



Lunedì MON	Martedì TUE	Mercoledì WED	Giovedì THU	Venerdì FRI	Sabato SAT	Domenica SUN	
27	28	29	30	31	1	<b>2</b>	5
3	4	5	6	7	8	<b>9</b>	6
10	11	12	13	14	15	<b>16</b>	7
17	18	19	20	21	22	<b>23</b>	8
24	25	26	27	28	1	2	9

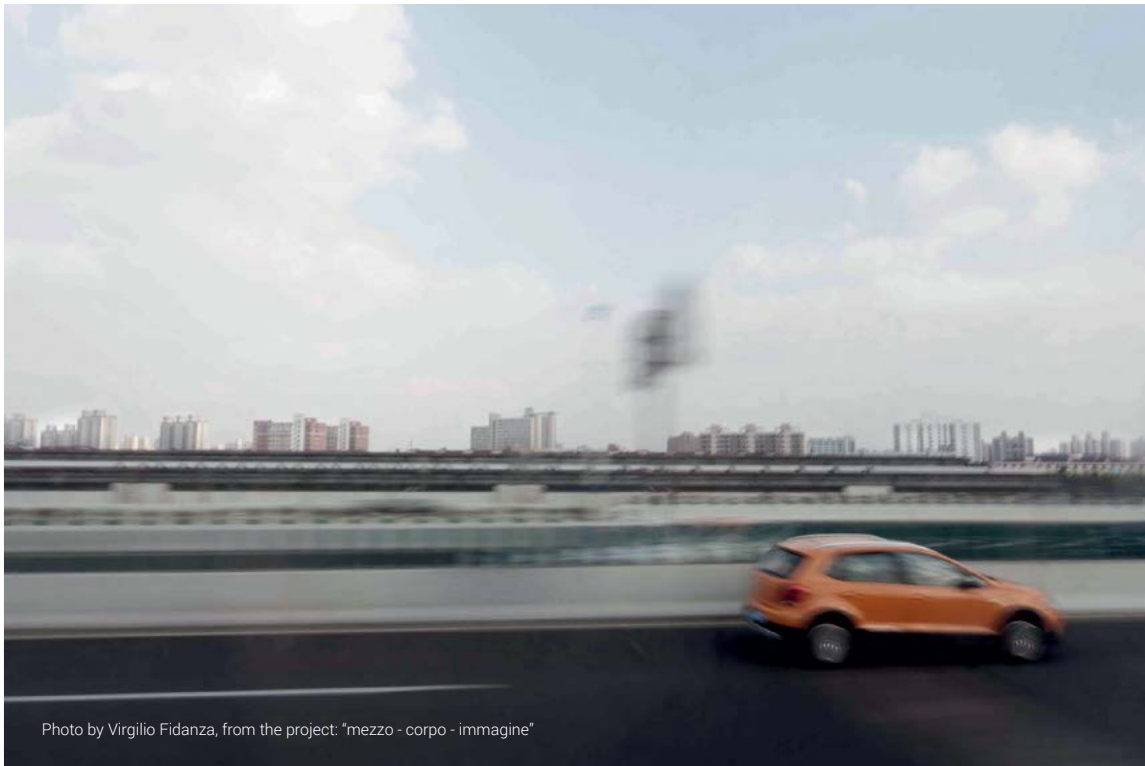


Photo by Virgilio Fidanza, from the project: "mezzo - corpo - immagine"

Marzo  
MARCH | 03 | 



Lunedì MON	Martedì TUE	Mercoledì WED	Giovedì THU	Venerdì FRI	Sabato SAT	Domenica SUN	
24	25	26	27	28	1	<b>2</b>	9
3	4	5	6	7	8	<b>9</b>	10
10	11	12	13	14	15	<b>16</b>	11
17	18	19	20	21	22	<b>23</b>	12
24	25	26	27	28	29	<b>30</b>	13
31	1	2	3	4	5	6	14



Photo by Virgilio Fidanza, from the project: "mezzo - corpo - immagine"

Aprile | 04 | 



Lunedì MON	Martedì TUE	Mercoledì WED	Giovedì THU	Venerdì FRI	Sabato SAT	Domenica SUN	
31	1	2	3	4	5	<b>6</b>	14
7	8	9	10	11	12	<b>13</b>	15
14	15	16	17	18	19	<b>20</b>	16
<b>21</b>	22	23	24	25	26	<b>27</b>	17
28	29	30	1	2	3	4	18

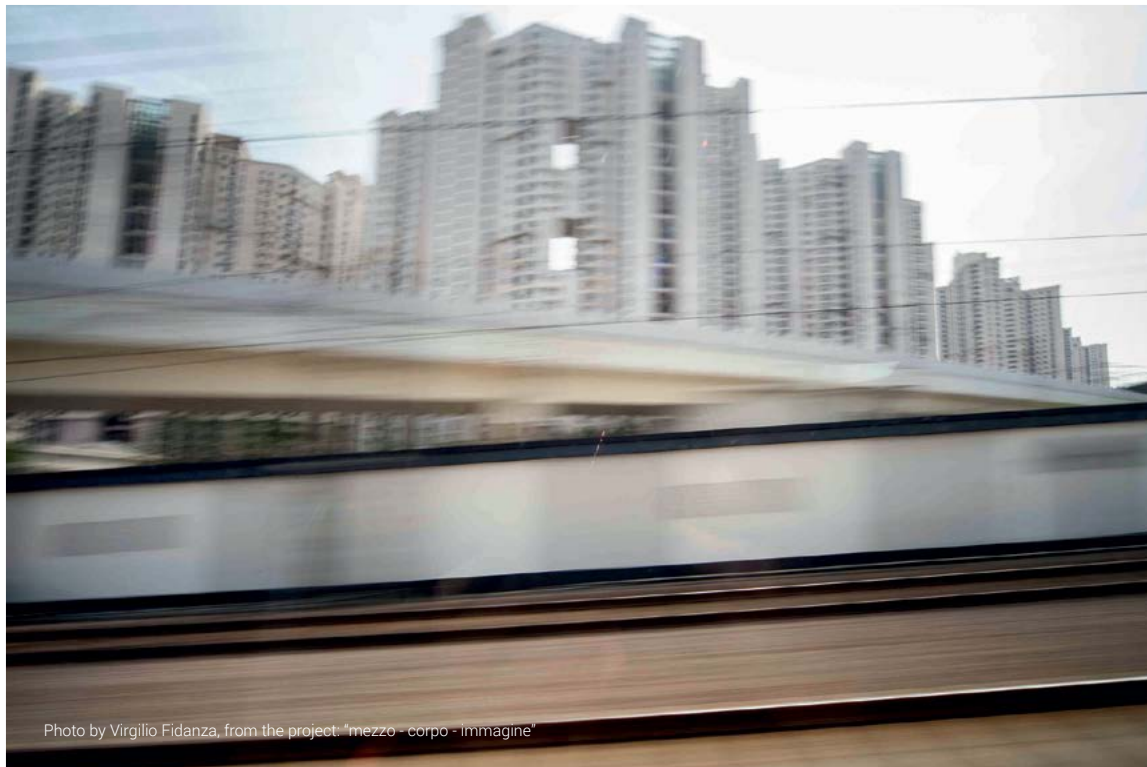


Photo by Virgilio Fianza, from the project: "mezzo - corpo - immagine"

Maggio  
MAY

05



Lunedì MON	Martedì TUE	Mercoledì WED	Giovedì THU	Venerdì FRI	Sabato SAT	Domenica SUN	
28	29	30	<b>1</b>	2	3	<b>4</b>	18
5	6	7	8	9	10	<b>11</b>	19
12	13	14	15	16	17	<b>18</b>	20
19	20	21	22	23	24	<b>25</b>	21
26	27	28	29	30	31	1	22

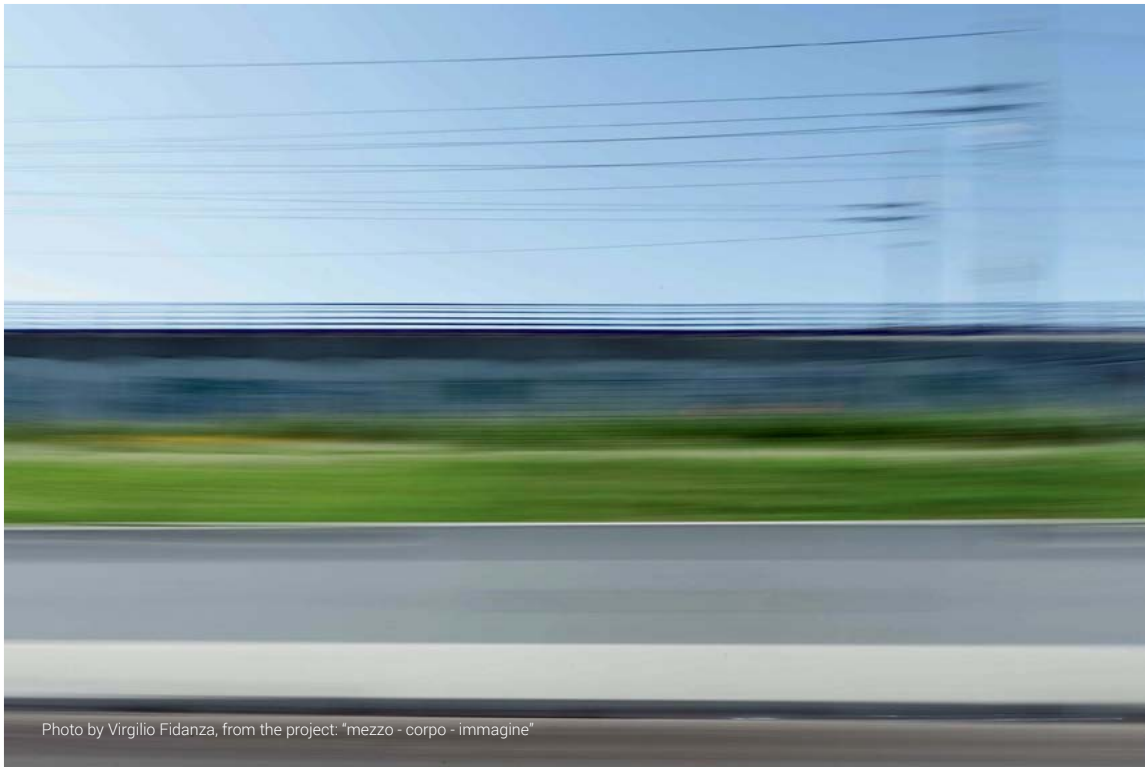


Photo by Virgilio Fidanza, from the project: "mezzo - corpo - immagine"



Giugno  
JUNE | 06 | 



Lunedì MON	Martedì TUE	Mercoledì WED	Giovedì THU	Venerdì FRI	Sabato SAT	Domenica SUN	
26	27	28	29	30	31	<b>1</b>	22
2	3	4	5	6	7	<b>8</b>	23
9	10	11	12	13	14	<b>15</b>	24
16	17	18	19	20	21	<b>22</b>	25
23	24	25	26	27	28	<b>29</b>	26
30	1	2	3	4	5	6	27



Photo by Virgilio Fidanza, from the project: "mezzo - corpo - immagine"

Luglio  
JULY

07



Lunedì MON	Martedì TUE	Mercoledì WED	Giovedì THU	Venerdì FRI	Sabato SAT	Domenica SUN	
30	1	2	3	4	5	<b>6</b>	27
7	8	9	10	11	12	<b>13</b>	28
14	15	16	17	18	19	<b>20</b>	29
21	22	23	24	25	26	<b>27</b>	30
28	29	30	31	1	2	3	31

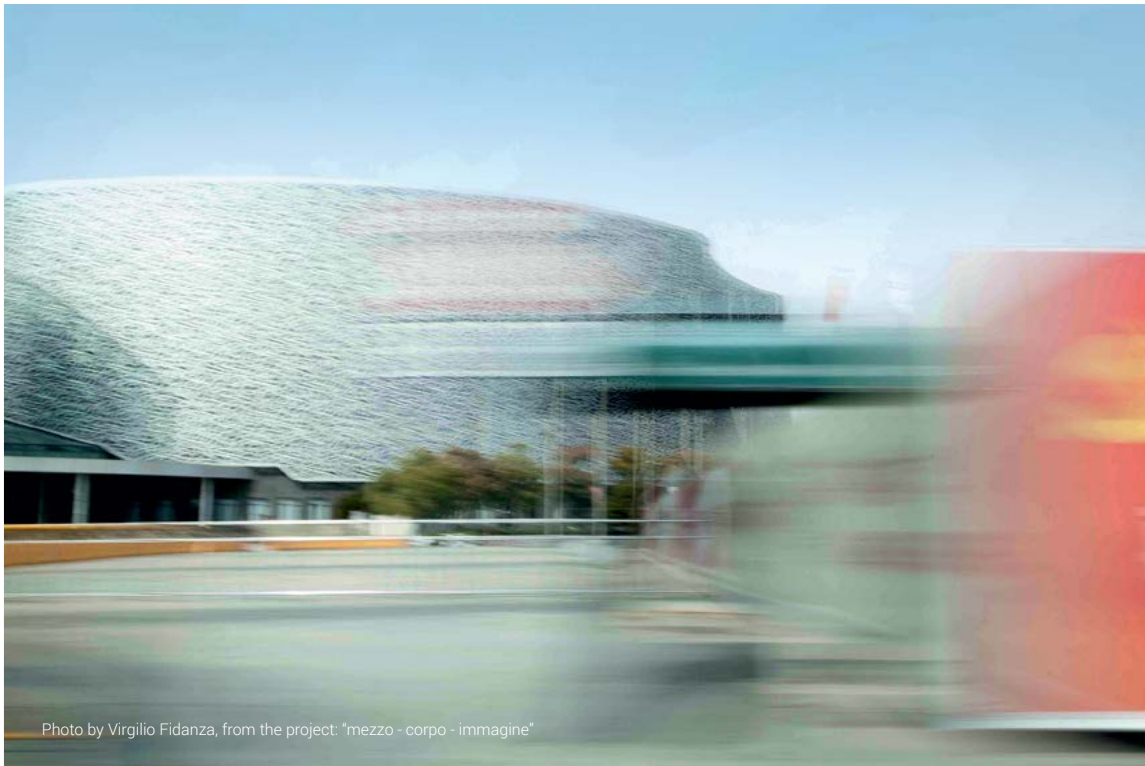


Photo by Virgilio Fidanza, from the project: "mezzo - corpo - immagine"

Agosto | 08 | 



Lunedì <b>MON</b>	Martedì <b>TUE</b>	Mercoledì <b>WED</b>	Giovedì <b>THU</b>	Venerdì <b>FRI</b>	Sabato <b>SAT</b>	Domenica <b>SUN</b>	
28	29	30	31	1	2	<b>3</b>	31
4	5	6	7	8	9	<b>10</b>	32
11	12	13	14	<b>15</b>	16	<b>17</b>	33
18	19	20	21	22	23	<b>24</b>	34
25	26	27	28	29	30	<b>31</b>	35



Photo by Virgilio Fianza, from the project: "mezzo - corpo - immagine"

Settembre  
SEPTEMBER

09



Lunedì <b>MON</b>	Martedì <b>TUE</b>	Mercoledì <b>WED</b>	Giovedì <b>THU</b>	Venerdì <b>FRI</b>	Sabato <b>SAT</b>	Domenica <b>SUN</b>	
1	2	3	4	5	6	<b>7</b>	36
8	9	10	11	12	13	<b>14</b>	37
15	16	17	18	19	20	<b>21</b>	38
22	23	24	25	26	27	<b>28</b>	39
29	30	1	2	3	4	5	40



Photo by Virgilio Fianza, from the project: "mezzo - corpo - immagine"



Ottobre  
**OCTOBER** | **10** | 



Lunedì <b>MON</b>	Martedì <b>TUE</b>	Mercoledì <b>WED</b>	Giovedì <b>THU</b>	Venerdì <b>FRI</b>	Sabato <b>SAT</b>	Domenica <b>SUN</b>	
29	30	1	2	3	4	<b>5</b>	<b>40</b>
6	7	8	9	10	11	<b>12</b>	<b>41</b>
13	14	15	16	17	18	<b>19</b>	<b>42</b>
20	21	22	23	24	25	<b>26</b>	<b>43</b>
27	28	29	30	31	1	2	<b>44</b>



Photo by Virgilio Fidanza, from the project: "mezzo - corpo - immagine"

Novembre  
**NOVEMBER**



Lunedì <b>MON</b>	Martedì <b>TUE</b>	Mercoledì <b>WED</b>	Giovedì <b>THU</b>	Venerdì <b>FRI</b>	Sabato <b>SAT</b>	Domenica <b>SUN</b>	
27	28	29	30	31	<b>1</b>	<b>2</b>	44
3	4	5	6	7	8	<b>9</b>	45
10	11	12	13	14	15	<b>16</b>	46
17	18	19	20	21	22	<b>23</b>	47
24	25	26	27	28	29	<b>30</b>	48



Photo by Virgilio Fidanza, from the project: "mezzo - corpo - immagine"

Dicembre  
DECEMBER

12



Lunedì MON	Martedì TUE	Mercoledì WED	Giovedì THU	Venerdì FRI	Sabato SAT	Domenica SUN	
1	2	3	4	5	6	7	49
8	9	10	11	12	13	14	50
15	16	17	18	19	20	21	51
22	23	24	25	26	27	28	52
29	30	31	1	2	3	4	1

# 2015



JANUARY	1 2 3 4 5 6 7 8 9 10 11 12 13 14 15 16 17 18 19 20 21 22 23 24 25 26 27 28 29 30 31	GENNAIO
FEBRUARY	1 2 3 4 5 6 7 8 9 10 11 12 13 14 15 16 17 18 19 20 21 22 23 24 25 26 27 28	FEBBRAIO
MARCH	1 2 3 4 5 6 7 8 9 10 11 12 13 14 15 16 17 18 19 20 21 22 23 24 25 26 27 28 29 30 31	MARZO
APRIL	1 2 3 4 5 6 7 8 9 10 11 12 13 14 15 16 17 18 19 20 21 22 23 24 25 26 27 28 29 30	APRILE
MAY	1 2 3 4 5 6 7 8 9 10 11 12 13 14 15 16 17 18 19 20 21 22 23 24 25 26 27 28 29 30 31	MAGGIO
JUNE	1 2 3 4 5 6 7 8 9 10 11 12 13 14 15 16 17 18 19 20 21 22 23 24 25 26 27 28 29 30	GIUGNO
JULY	1 2 3 4 5 6 7 8 9 10 11 12 13 14 15 16 17 18 19 20 21 22 23 24 25 26 27 28 29 30 31	LUGLIO
AUGUST	1 2 3 4 5 6 7 8 9 10 11 12 13 14 15 16 17 18 19 20 21 22 23 24 25 26 27 28 29 30 31	AGOSTO
SEPTEMBER	1 2 3 4 5 6 7 8 9 10 11 12 13 14 15 16 17 18 19 20 21 22 23 24 25 26 27 28 29 30	SETTEMBRE
OCTOBER	1 2 3 4 5 6 7 8 9 10 11 12 13 14 15 16 17 18 19 20 21 22 23 24 25 26 27 28 29 30 31	OTTOBRE
NOVEMBER	1 2 3 4 5 6 7 8 9 10 11 12 13 14 15 16 17 18 19 20 21 22 23 24 25 26 27 28 29 30	NOVEMBRE
DECEMBER	1 2 3 4 5 6 7 8 9 10 11 12 13 14 15 16 17 18 19 20 21 22 23 24 25 26 27 28 29 30 31	DICEMBRE